

# São Paulo Correias - Acessórios Industriais

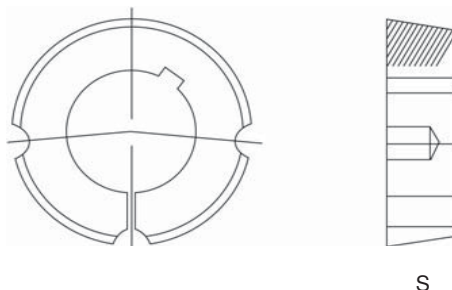
☎ 11 3455-5872

www.saopaulocorreias.com.br

## Buchas Cônicas TL / QD



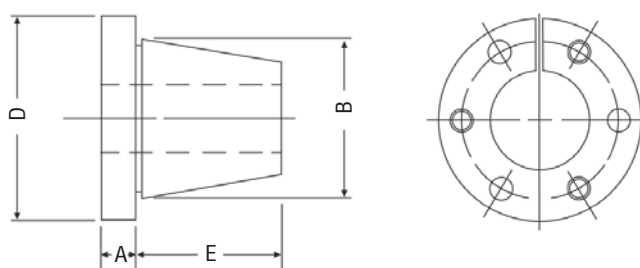
*Sem flanges*  
TL [ Taper Lock ]



| Tipo/Referencia | Capacidade Torque N/M | S    | Ø Furo |        | Parafuso |
|-----------------|-----------------------|------|--------|--------|----------|
|                 |                       |      | Mínimo | Máximo |          |
| 1008            | 100                   | 22,2 | 9,0    | 22,0   | M6 x 12  |
| 1108            | 110                   | 22,2 | 9,0    | 25,0   | M6 x 12  |
| 1210            | 260                   | 25,4 | 14,0   | 32,0   | M10 x 16 |
| 1215            | 300                   | 38,1 | 14,0   | 35,0   | M10 x 16 |
| 1610            | 360                   | 25,4 | 14,0   | 42,0   | M10 x 16 |
| 1615            | 360                   | 38,1 | 14,0   | 38,0   | M10 x 16 |
| 2012            | 600                   | 31,8 | 14,0   | 50,0   | M10 x 20 |
| 2517            | 980                   | 44,5 | 16,0   | 60,0   | M12 x 25 |
| 2525            | 1000                  | 63,5 | 16,0   | 60,0   | M12 x 25 |
| 3020            | 2000                  | 50,8 | 25,0   | 75,0   | M16 x 30 |
| 3030            | 2000                  | 76,2 | 35,0   | 75,0   | M16 x 30 |



*Flangeadas*  
QD



| TIPO | CAPAC. torque N/M | A    | B     | D     | E     | L     | Linha de centro parafuso | PARAFUSO SEXTAVADO |       | Ø Furos c/ chaveta |        |
|------|-------------------|------|-------|-------|-------|-------|--------------------------|--------------------|-------|--------------------|--------|
|      |                   |      |       |       |       |       |                          | Dimensões          | Qtde. | Mínima             | Máxima |
| JA   | 112               | 8,0  | 35,0  | 51,0  | 17,4  | 25,4  | 67,4                     | M5 x 25            | 3     | 12                 | 25,4   |
| SH   | 395               | 9,5  | 47,5  | 68,0  | 22,0  | 31,5  | 57,2                     | M6 x 35            | 3     | 12                 | 35,0   |
| SDS  | 560               | 11,0 | 55,5  | 81,0  | 22,0  | 33,0  | 68,3                     | M6 x 55            | 3     | 12                 | 42,0   |
| SK   | 790               | 12,7 | 71,4  | 98,4  | 35,0  | 47,7  | 68,3                     | M8 x 50            | 3     | 16                 | 54,0   |
| SF   | 1240              | 12,7 | 79,4  | 117,5 | 38,0  | 50,7  | 84,1                     | M10 x 50           | 3     | 16                 | 57,0   |
| E    | 2250              | 19,0 | 97,4  | 152,4 | 47,0  | 66,0  | 127,0                    | M12 x 70           | 3     | 22                 | 70,0   |
| F    | 3380              | 20,5 | 112,7 | 168,0 | 71,5  | 92,0  | 142,9                    | M14 x 90           | 3     | 25                 | 80,0   |
| J    | 5075              | 25,4 | 130,7 | 185,0 | 88,6  | 114,0 | 158,7                    | M16 x 115          | 3     | 25                 | 95,0   |
| M    | 9590              | 31,7 | 165,1 | 232,0 | 139,8 | 171,5 | 200,0                    | M20 x 170          | 3     | 50                 | 115,0  |
| N    | 16930             | 44,5 | 177,8 | 254,0 | 168,0 | 206,0 | 216,0                    | M22 x 200          | 4     | 60                 | 125,0  |
| P    | 28200             | 50,8 | 209,6 | 298,5 | 193,5 | 238,0 | 254,0                    | M24 x 240          | 4     | 70                 | 145,0  |
| W    | 42320             | 80,0 | 265,0 | 381,0 | 238,2 | 289,0 | 323,8                    | M30 x 280          | 4     | 100                | 180,0  |
| S    | 70540             | 82,5 | 308,0 | 451,0 | 317,5 | 400,0 | 381,0                    | M30 x 390          | 5     | 100                | 210,0  |

São Paulo Correias - Acessórios Industriais - www.saopaulocorreias.com.br - 55 (11) 3455-5872

e-mail: atendimento@saopaulocorreias.com.br